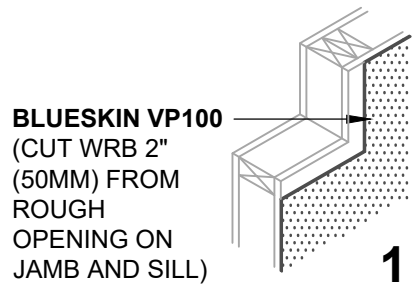


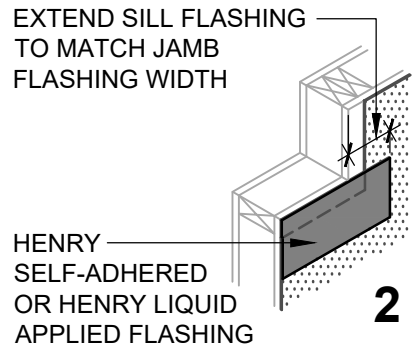
THE DEPICTED DETAIL SHOWS ONE OF THE SEVERAL COMMONLY ACCEPTED METHODS OF WINDOW INSTALLATION.



**HENRY 1-2-3 MOISTURE CONTROL SYSTEM  
WEATHER-RESISTIVE BARRIER (WRB)  
INSTALLATION GUIDELINES**

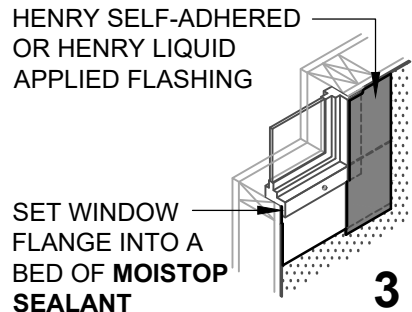


**BLUESKIN VP100**  
(CUT WRB 2"  
(50MM) FROM  
ROUGH  
OPENING ON  
JAMB AND SILL)



EXTEND SILL FLASHING  
TO MATCH JAMB  
FLASHING WIDTH

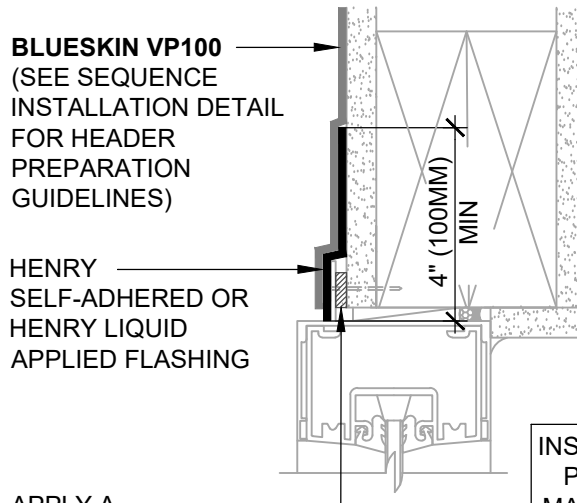
HENRY  
SELF-ADHERED  
OR HENRY LIQUID  
APPLIED FLASHING



HENRY SELF-ADHERED  
OR HENRY LIQUID  
APPLIED FLASHING

SET WINDOW  
FLANGE INTO A  
BED OF **MOISTOP**  
**SEALANT**

**WINDOW FLASHING**  
ISOMETRIC VIEW



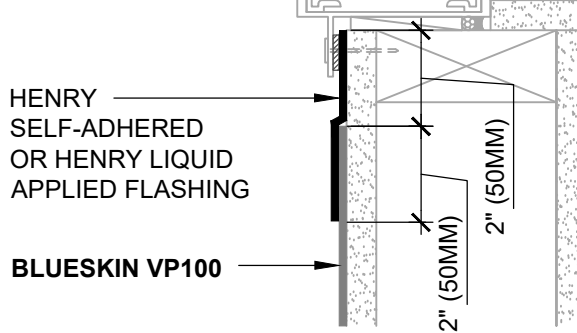
**BLUESKIN VP100**  
(SEE SEQUENCE  
INSTALLATION DETAIL  
FOR HEADER  
PREPARATION  
GUIDELINES)

HENRY  
SELF-ADHERED OR  
HENRY LIQUID  
APPLIED FLASHING

4" (100MM)  
MIN

APPLY A  
CONTINUOUS 3/8"  
(10MM) BEAD OF  
**MOISTOP SEALANT**  
ON INTERIOR SIDE  
OF WINDOW FLANGE

INSTALL WINDOW  
PER WINDOW  
MANUFACTURER  
REQUIREMENTS



HENRY  
SELF-ADHERED  
OR HENRY LIQUID  
APPLIED FLASHING

**BLUESKIN VP100**

2" (50MM)

2" (50MM)

**ASTM E2112 - METHOD A1**  
SECTION VIEW

**NOTES**

1. VISIT [WWW.HENRY.COM/WARRANTY](http://WWW.HENRY.COM/WARRANTY) FOR ELIGIBILITY REQUIREMENTS OF THE 15-YEAR RESIDENTIAL AND LIGHT COMMERCIAL HENRY 1-2-3 MOISTURE CONTROL SYSTEM WARRANTY.
2. HENRY OFFERS **BLUESKIN VP100** IN THE UNITED STATES AND CANADA. PRODUCT AVAILABILITY AND WARRANTY OPTIONS MAY VARY BY LOCATION. REFER TO THE HENRY **BLUESKIN VP100** GUIDE SPECIFICATION FOR RECOMMENDED FLASHINGS, SEALANTS, AND SYSTEM INFORMATION.
3. INSTALLATION "METHOD A1" REFERS TO COMMON WINDOWS (SURFACE MOUNTED). INSTALL WINDOW PER WINDOW MANUFACTURER REQUIREMENTS.
4. INSTALLATIONS WITHOUT A DRAINAGE SILL PAN ARE LIMITED TO LOW WIND AND WATER EXPOSURE CONDITIONS.
5. SEE PRODUCT SPECIFIC TECHNICAL DATA SHEET FOR ROLL SIZES, MAXIMUM UV EXPOSURE, COMPATIBILITY CONCERNS, APPLICATION TEMPERATURES AND SERVICE TEMPERATURE LIMITATIONS.
6. CLADDING, INSULATION, AND INTERIOR OPTIONAL VAPOR BARRIER NOT SHOWN FOR CLARITY. REFER TO LOCAL CODE ORDINANCES FOR INSULATION AND VAPOR BARRIER REQUIREMENTS.
7. SUBSTRATES MUST BE CLEAN AND DRY.
8. SELF-ADHERED MEMBRANES MAY REQUIRE A PRIMER FOR OPTIMAL ADHESION TO SOME SURFACES AND/OR SUBSTRATE TEMPERATURES. REFER TO PRODUCT SPECIFIC TECHNICAL DATA SHEET FOR PRIMER REQUIREMENTS.
9. VERIFY WEATHER-RESISTIVE BARRIER IS FREE FROM PROTRUSIONS OR DAMAGE PRIOR TO CLADDING INSTALLATION.
10. CONTACT HENRY AT 800-773-4777 FOR TECHNICAL ASSISTANCE.



A CARLISLE COMPANY

999 N. Pacific Coast Highway, Suite 800  
El Segundo, CA 90245  
800-486-1278 • [www.henry.com](http://www.henry.com)

**BLUESKIN VP100 SELF-ADHERED AIR BARRIER  
FLANGED WINDOW - METHOD A1  
WINDOW INSTALLATION FOR LOW WIND AND WATER EXPOSURE  
FLASHING INSTALLED AFTER WRB**

MANUFACTURER INSTALLATION GUIDELINES ARE FOR REFERENCE ONLY. HENRY DOES NOT ASSUME RESPONSIBILITY FOR ERRORS OR DEVIATIONS IN DESIGN OR ENGINEERING. PROJECT SPECIFIC VERIFICATION IS RECOMMENDED PRIOR TO INSTALLATION. DETAILS ARE NOT TO SCALE. REFER TO PRODUCT SPECIFIC TECHNICAL DATA SHEET FOR PRODUCT INFORMATION, RECOMMENDED AUXILIARY COMPONENTS AND INSTALLATION INSTRUCTIONS.

04-18-2022

PAGE 1 OF 1

**VPWRB-6A1-L1**