

**FLASHING INSTALLED AFTER WRB**  
 REVERSE LAP

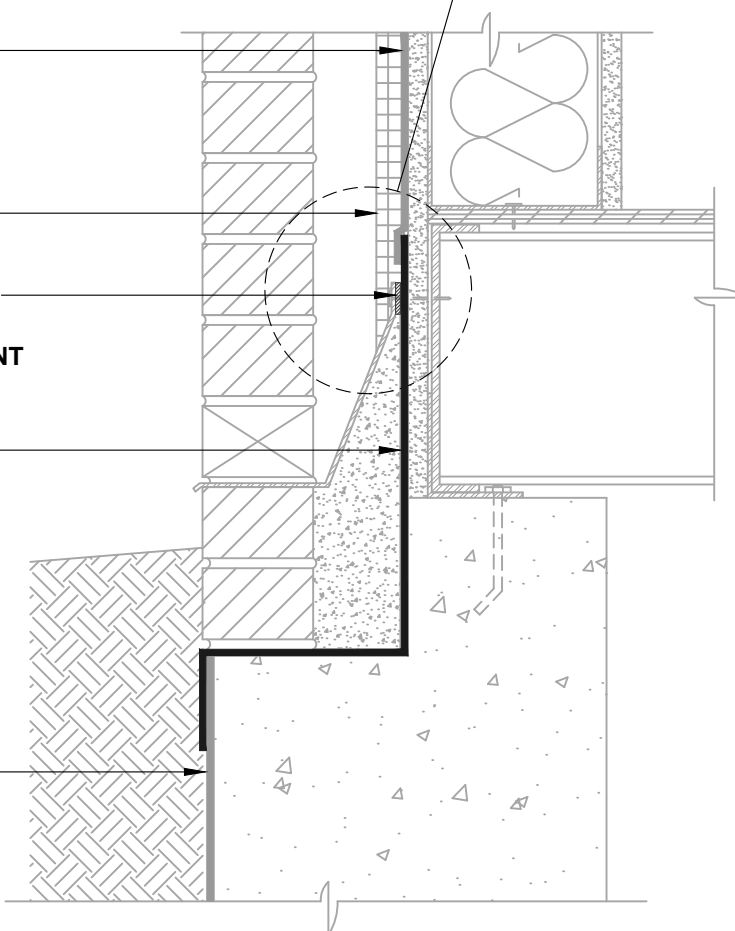
**AIR-BLOC 16MR**  
 LAP AIR BARRIER  
 1" ONTO FLASHING

OPTIONAL INSULATION

SET TERMINATION BAR  
 IN A BED OF  
**HENRY 925 BES SEALANT**

**BLUESKIN TWF**

**HENRY BELOW GRADE**  
**WATERPROOFING**  
 (CONTACT HENRY FOR  
 PROJECT SPECIFIC  
 RECOMMENDATIONS)



**NOTES:**

1. DETAIL SHOWS **AIR-BLOC 16MR FLUID APPLIED AIR AND VAPOR BARRIER**. SUBSTRATE SHOWN IS FOR REFERENCE ONLY. ACCEPTABLE SUBSTRATES INCLUDE PLYWOOD, OSB, CONCRETE, CMU, METAL, AND EXTERIOR GRADE SHEATHING.
2. INSTALL **AIR-BLOC 16MR** TO ACHIEVE A CONTINUOUS WATER-RESISTIVE BARRIER (WRB). INSULATION AND CLADDING SHOWN FOR REFERENCE ONLY. REFER TO LOCAL CODE ORDINANCES FOR INSULATION AND VAPOR BARRIER REQUIREMENTS.
3. REFER TO PRODUCT SPECIFIC TECHNICAL DATA SHEET (TDS) AND **AIR-BLOC 16MR** GUIDE SPECIFICATION FOR INSTALLATION PROCEDURES.

MANUFACTURER GUIDE DETAILS ARE FOR REFERENCE ONLY. HENRY DOES NOT ASSUME RESPONSIBILITY FOR ERRORS OR DEVIATIONS IN DESIGN OR ENGINEERING. PROJECT SPECIFIC VERIFICATION IS RECOMMENDED PRIOR TO INSTALLATION.

**AIR-BLOC 16MR FLUID APPLIED AIR AND VAPOR BARRIER**

**WALL FOUNDATION**  
**EXTERIOR WALL AND FOUNDATION TRANSITION**  
**SLAB BELOW GRADE WITH MASONRY LEDGE**

SCALE: N.T.S. 03-05-2020

**AB16MR-1A**



999 N. Pacific Coast Highway, Suite 800  
 El Segundo, CA 90245  
 800-486-1278 • www.henry.com