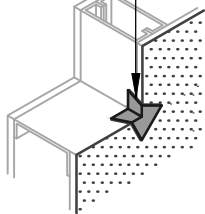


### OPTION #1

GUSSET

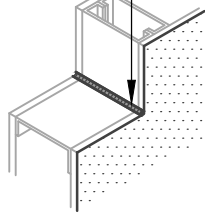
BLUESKIN SA



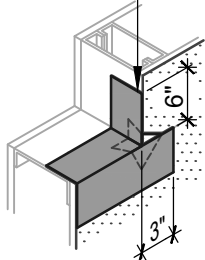
### OPTION #2

SEALANT

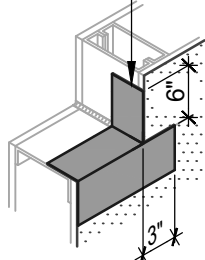
HENRY 925 BES SEALANT  
OR AIR-BLOC LF



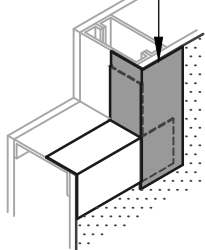
BLUESKIN SA



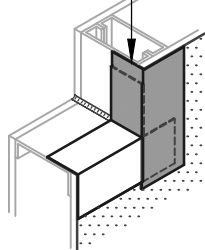
BLUESKIN SA  
OR AIR-BLOC LF



BLUESKIN SA

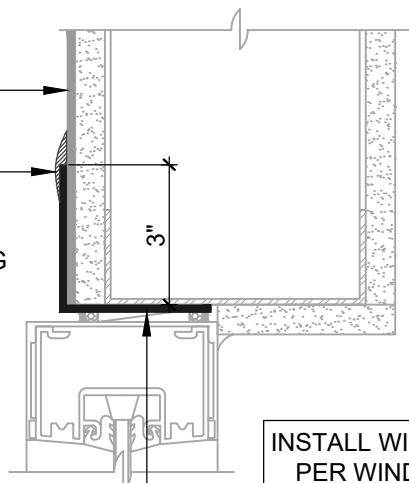


BLUESKIN SA  
OR AIR-BLOC LF

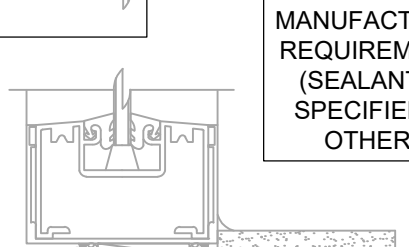


AIR-BLOC 16MR

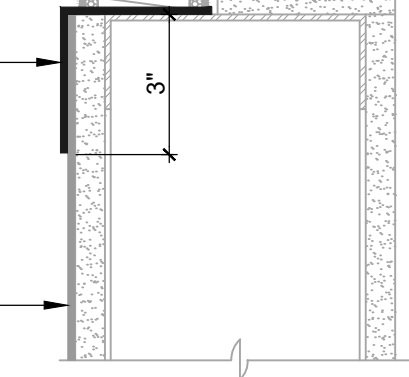
HENRY 925 BES SEALANT  
OR AIR-BLOC LF  
ENCAPSULATE UPPER EDGE  
OF SELF-ADHERED FLASHING  
REVERSE LAP



BLUESKIN SA OR  
AIR-BLOC LF  
EXTEND FLASHING  
3" (SUGGESTED) INTO  
ROUGH OPENING (2" MIN)



BLUESKIN SA OR  
AIR-BLOC LF  
EXTEND FLASHING  
3" (SUGGESTED) INTO  
ROUGH OPENING (2" MIN)



AIR-BLOC 16MR

INSTALL WINDOW  
PER WINDOW  
MANUFACTURER  
REQUIREMENTS  
(SEALANT AS  
SPECIFIED BY  
OTHERS)

### WINDOW SILL/JAMB FLASHING

SEALANT AND GUSSET METHODS

### ASTM E2112- METHOD B1 (SECTION VIEW)

FLASHING INSTALLED AFTER WRB

#### NOTES:

1. DETAIL SHOWS **AIR-BLOC 16MR FLUID APPLIED AIR AND VAPOR BARRIER**. SUBSTRATE SHOWN IS FOR REFERENCE ONLY. ACCEPTABLE SUBSTRATES INCLUDE PLYWOOD, OSB, CONCRETE, CMU, METAL, AND EXTERIOR GRADE SHEATHING.
2. OTHER FLASHING OPTIONS INCLUDE: **BLUESKIN SA LT, BLUESKIN BUTYL FLASH OR BLUESKIN METAL CLAD**.
3. PRIME CUT/RAW EDGES OF EXPOSED GYPSUM SHEATHING CORE PRIOR TO **AIR-BLOC LF** APPLICATION. RECOMMENDED PRIMER/ADHESIVE INCLUDE: **BLUESKIN SPRAY PREP**.
4. HENRY WINDOW FLASHING DETAILS ARE BASED ON ASTM E2112. ACTUAL CONDITIONS MAY VARY. VERIFY PROJECT SPECIFIC WINDOW INSTALLATION REQUIREMENTS AND FLASHING COMPATIBILITY WITH DESIGN PROFESSIONAL.
5. INSTALL **AIR-BLOC 16MR** TO ACHIEVE A CONTINUOUS WATER-RESISTIVE BARRIER (WRB). INSULATION AND CLADDING NOT SHOWN FOR CLARITY. REFER TO LOCAL CODE ORDINANCES FOR INSULATION AND VAPOR BARRIER REQUIREMENTS.
6. REFER TO PRODUCT SPECIFIC TECHNICAL DATA SHEET (TDS) AND **AIR-BLOC 16MR** GUIDE SPECIFICATION FOR FOR INSTALLATION PROCEDURES.

# Henry®

999 N. Pacific Coast Highway, Suite 800  
El Segundo, CA 90245  
800-486-1278 • www.henry.com

MANUFACTURER GUIDE DETAILS ARE FOR REFERENCE ONLY. HENRY DOES NOT ASSUME RESPONSIBILITY FOR ERRORS OR DEVIATIONS IN DESIGN OR ENGINEERING. PROJECT SPECIFIC VERIFICATION IS RECOMMENDED PRIOR TO INSTALLATION.

**AIR-BLOC 16MR FLUID APPLIED AIR AND VAPOR BARRIER**

## NON-FLANGED WINDOW

**ASTM E2112 METHOD B1  
FLASHING INSTALLED AFTER WRB**

SCALE: N.T.S.

03-05-2020

## AB16MR-6B1-A