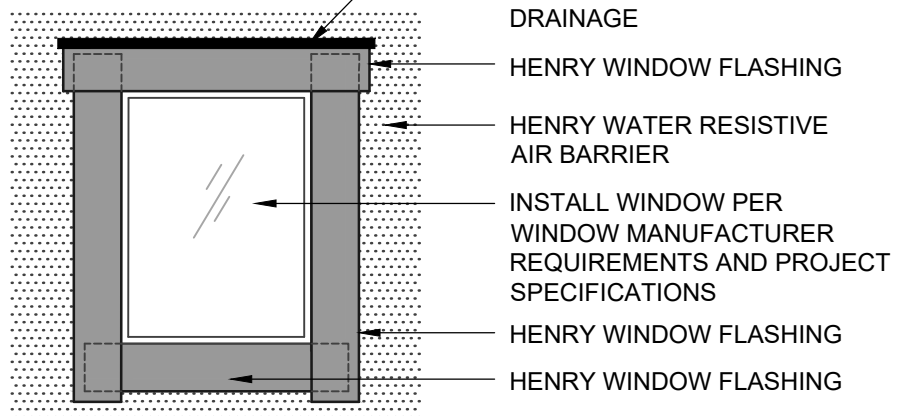


**ASTM E2112 - METHOD B1**  
FLASHING INSTALLED AFTER WRB

**Henry** WATER RESISTIVE BARRIER (WRB) ASSEMBLY

<b>HENRY WATER RESISTIVE AIR BARRIER</b>
<ul style="list-style-type: none"> <li>• AIR-BLOC 16MR</li> </ul>
<b>HENRY WINDOW FLASHING</b>
<ul style="list-style-type: none"> <li>• BLUESKIN SA</li> <li>• AIR-BLOC LF</li> </ul>
<b>HENRY SEALANT</b>
<ul style="list-style-type: none"> <li>• HENRY 925 BES SEALANT</li> </ul>



**ASTM E2112 - METHOD B1 (ELEVATION)**  
FLASHING INSTALLED AFTER WRB

**NOTES:**

1. DETAIL SHOWS **AIR-BLOC 16MR FLUID APPLIED AIR AND VAPOR BARRIER**. SUBSTRATE SHOWN IS FOR REFERENCE ONLY. ACCEPTABLE SUBSTRATES INCLUDE PLYWOOD, OSB, CONCRETE, CMU, METAL, AND EXTERIOR GRADE SHEATHING.
2. OTHER FLASHING OPTIONS INCLUDE: **BLUESKIN BUTYL FLASH, BLUESKIN SA LT OR BLUESKIN METAL CLAD**.
3. PRIME CUT/RAW EDGES OF EXPOSED GYPSUM SHEATHING CORE PRIOR TO **AIR-BLOC LF** APPLICATION. RECOMMENDED PRIMER/ADHESIVE INCLUDE: **BLUESKIN SPRAY PREP**.
4. HENRY WINDOW FLASHING DETAILS ARE BASED ON ASTM E2112. ACTUAL CONDITIONS MAY VARY. VERIFY PROJECT SPECIFIC WINDOW INSTALLATION REQUIREMENTS AND FLASHING COMPATIBILITY WITH DESIGN PROFESSIONAL.
5. REFER TO PRODUCT SPECIFIC TECHNICAL DATA SHEET (TDS) AND **AIR-BLOC 16MR** GUIDE SPECIFICATION FOR INSTALLATION PROCEDURES.



999 N. Pacific Coast Highway, Suite 800  
El Segundo, CA 90245  
800-486-1278 • www.henry.com

MANUFACTURER GUIDE DETAILS ARE FOR REFERENCE ONLY. HENRY DOES NOT ASSUME RESPONSIBILITY FOR ERRORS OR DEVIATIONS IN DESIGN OR ENGINEERING. PROJECT SPECIFIC VERIFICATION IS RECOMMENDED PRIOR TO INSTALLATION.

**AIR-BLOC 16MR FLUID APPLIED AIR AND VAPOR BARRIER**

**NON-FLANGED WINDOW**

**ASTM E2112 METHOD B1  
FLASHING INSTALLED AFTER WRB**

SCALE: N.T.S.

03-05-2020

**AB16MR-6B1-C**