

HENRY HIGH
TEMPERATURE ROOFING
UNDERLAYMENT

BLUESKIN SA

OPTIONAL INSULATION

AIR-BLOC 16MR
LAP AIR BARRIER 1" ONTO
FLASHING

BLUESKIN SA OR
AIR-BLOC LF

AIR-BLOC 16MR
LAP AIR BARRIER 1" ONTO
FLASHING

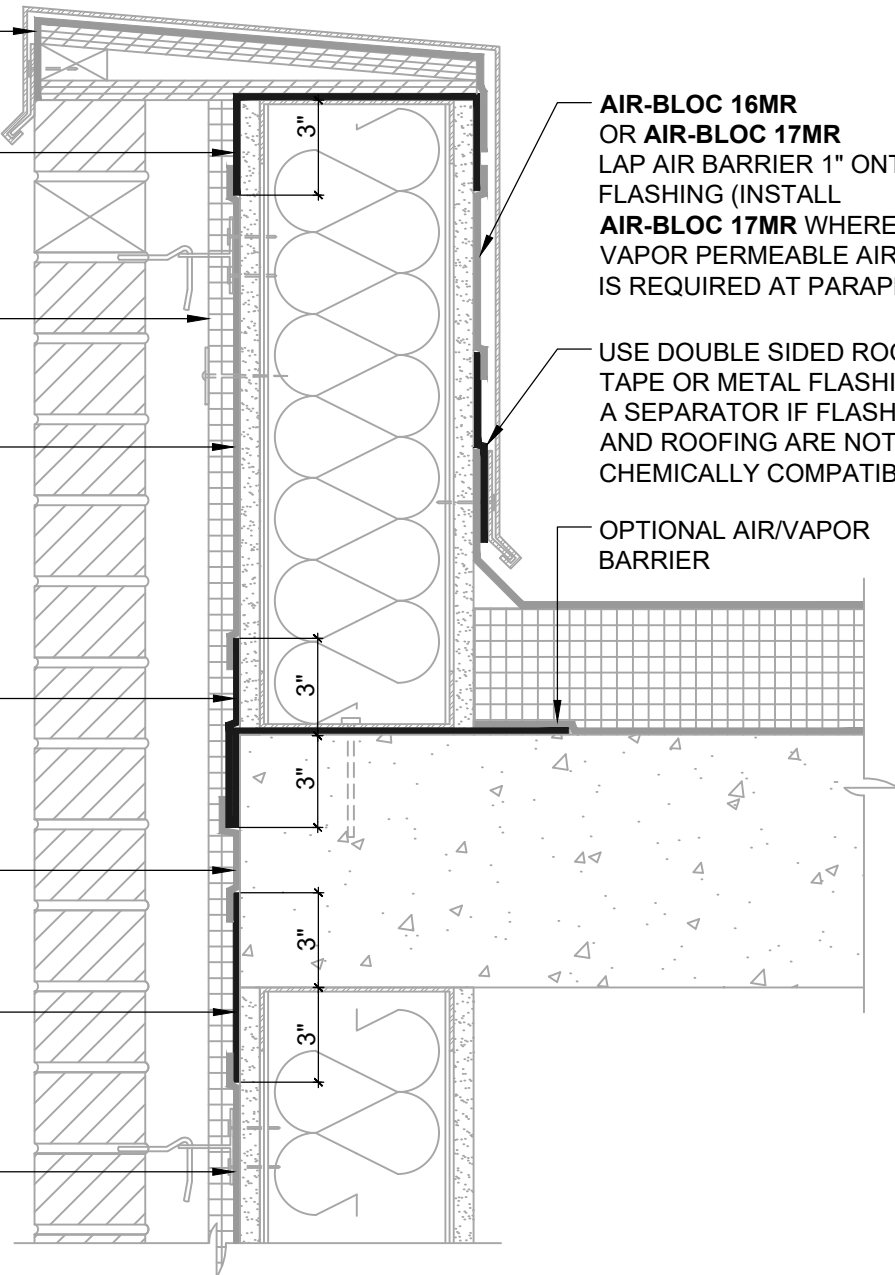
BLUESKIN SA OR
AIR-BLOC LF

AIR-BLOC 16MR
LAP AIR BARRIER 1" ONTO
FLASHING

AIR-BLOC 16MR
OR AIR-BLOC 17MR
LAP AIR BARRIER 1" ONTO
FLASHING (INSTALL
AIR-BLOC 17MR WHERE A
VAPOR PERMEABLE AIR BARRIER
IS REQUIRED AT PARAPET)

USE DOUBLE SIDED ROOFING
TAPE OR METAL FLASHING AS
A SEPARATOR IF FLASHING
AND ROOFING ARE NOT
CHEMICALLY COMPATIBLE

OPTIONAL AIR/VAPOR
BARRIER



NOTES:

1. DETAIL SHOWS **AIR-BLOC 16MR FLUID APPLIED AIR AND VAPOR BARRIER**. SUBSTRATE SHOWN IS FOR REFERENCE ONLY. ACCEPTABLE SUBSTRATES INCLUDE PLYWOOD, OSB, CONCRETE, CMU, METAL, AND EXTERIOR GRADE SHEATHING.
2. OTHER FLASHING OPTIONS INCLUDE: **BLUESKIN SA LT, BLUESKIN BUTYL FLASH OR BLUESKIN METAL CLAD**.
3. INSTALL **AIR-BLOC 16MR** TO ACHIEVE A CONTINUOUS WATER-RESISTIVE BARRIER (WRB). INSULATION AND CLADDING SHOWN FOR REFERENCE ONLY. REFER TO LOCAL CODE ORDINANCES FOR INSULATION AND VAPOR BARRIER REQUIREMENTS.
4. REFER TO PRODUCT SPECIFIC TECHNICAL DATA SHEET (TDS) AND **AIR-BLOC 16MR** GUIDE SPECIFICATION FOR INSTALLATION PROCEDURES.

Henry[®]

999 N. Pacific Coast Highway, Suite 800
El Segundo, CA 90245
800-486-1278 • www.henry.com

MANUFACTURER GUIDE DETAILS ARE FOR REFERENCE ONLY. HENRY DOES NOT ASSUME RESPONSIBILITY FOR ERRORS OR DEVIATIONS IN DESIGN OR ENGINEERING. PROJECT SPECIFIC VERIFICATION IS RECOMMENDED PRIOR TO INSTALLATION.

AIR-BLOC 16MR FLUID APPLIED AIR AND VAPOR BARRIER

PARAPET TRANSITION

**AIR BARRIER INSTALLED ON FRONT OF WALL
AND AIR BARRIER INSTALLED ON BACK OF WALL**

SCALE: N.T.S.

03-05-2020

AB16MR-9B