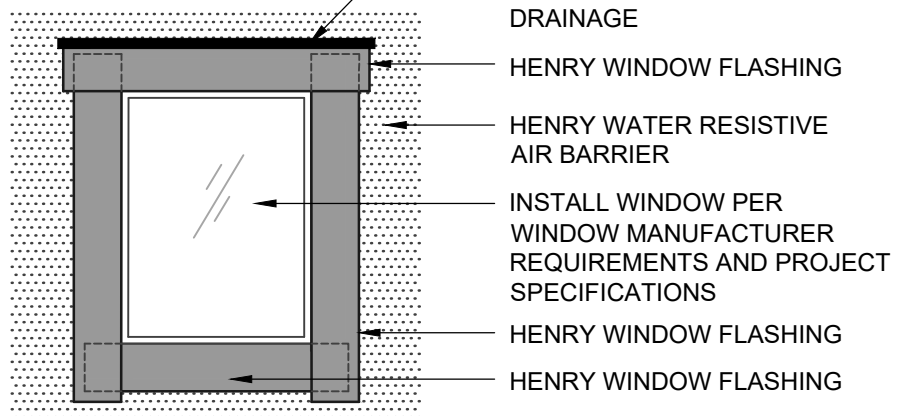


ASTM E2112 - METHOD B1
FLASHING INSTALLED AFTER WRB

Henry WATER RESISTIVE BARRIER (WRB) ASSEMBLY

| |
|--|
| HENRY WATER RESISTIVE AIR BARRIER |
| <ul style="list-style-type: none"> AIR-BLOC 17MR |
| HENRY WINDOW FLASHING |
| <ul style="list-style-type: none"> BLUESKIN SA AIR-BLOC LF |
| HENRY SEALANT |
| <ul style="list-style-type: none"> HENRY 925 BES SEALANT |



ASTM E2112 - METHOD B1 (ELEVATION)
FLASHING INSTALLED AFTER WRB

NOTES:

1. DETAIL SHOWS **AIR-BLOC 17MR FLUID APPLIED VAPOR PERMEABLE AIR BARRIER**. SUBSTRATE SHOWN IS FOR REFERENCE ONLY. ACCEPTABLE SUBSTRATES INCLUDE PLYWOOD, OSB, CONCRETE, CMU, METAL, AND EXTERIOR GRADE SHEATHING.
2. OTHER FLASHING OPTIONS INCLUDE: **BLUESKIN BUTYL FLASH, BLUESKIN SA LT OR BLUESKIN METAL CLAD**.
3. PRIME CUT/RAW EDGES OF EXPOSED GYPSUM SHEATHING CORE PRIOR TO **AIR-BLOC LF** APPLICATION. RECOMMENDED PRIMER/ADHESIVE INCLUDE: **BLUESKIN SPRAY PREP**.
4. HENRY WINDOW FLASHING DETAILS ARE BASED ON ASTM E2112. ACTUAL CONDITIONS MAY VARY. VERIFY PROJECT SPECIFIC WINDOW INSTALLATION REQUIREMENTS AND FLASHING COMPATIBILITY WITH DESIGN PROFESSIONAL.
5. REFER TO PRODUCT SPECIFIC TECHNICAL DATA SHEET (TDS) AND **AIR-BLOC 17MR** GUIDE SPECIFICATION FOR INSTALLATION PROCEDURES.



999 N. Pacific Coast Highway, Suite 800
El Segundo, CA 90245
800-486-1278 • www.henry.com

MANUFACTURER GUIDE DETAILS ARE FOR REFERENCE ONLY. HENRY DOES NOT ASSUME RESPONSIBILITY FOR ERRORS OR DEVIATIONS IN DESIGN OR ENGINEERING. PROJECT SPECIFIC VERIFICATION IS RECOMMENDED PRIOR TO INSTALLATION.

AIR-BLOC 17MR FLUID APPLIED VAPOR PERMEABLE AIR BARRIER

NON-FLANGED WINDOW

**ASTM E2112 METHOD B1
FLASHING INSTALLED AFTER WRB**

SCALE: N.T.S.

03-05-2020

AB17MR-6B1-C