

AIR BARRIER INSTALLED AFTER PUMADEC SYSTEM
N.T.S

AIR-BLOC 31MR

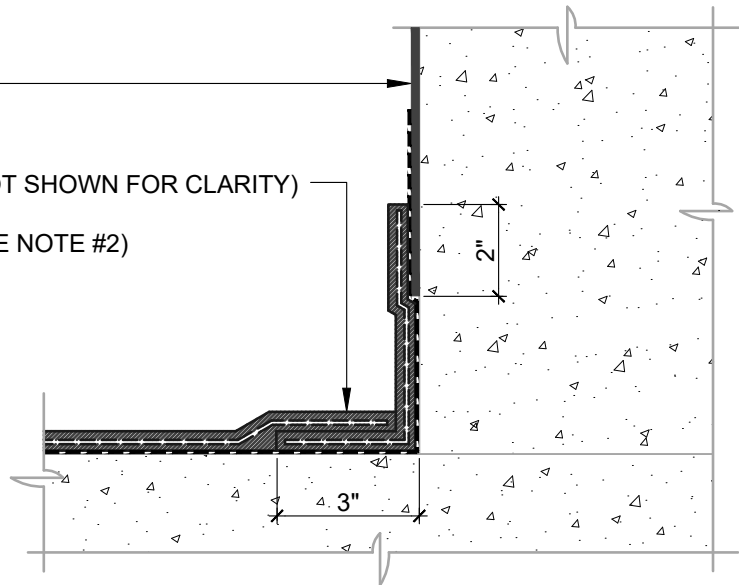
TOP/WEAR/TRAFFIC COAT (NOT SHOWN FOR CLARITY)
FIELD MEMBRANE

- PUMADEC FLEX 30SL (SEE NOTE #2)

 FLASHING

- PUMADEC FLEX 31MV
- PUMADEC N-FLEECE
- PUMADEC FLEX 31MV

 PUMADEC PRIMER 20



AIR BARRIER INSTALLED BEFORE PUMADEC SYSTEM
N.T.S

NOTES:

1. DETAIL SHOWS **AIR-BLOC 31MR VAPOR PERMEABLE AIR BARRIER** AND **HENRY PUMADEC SYSTEM** TRANSITION. SUBSTRATE SHOWN IS FOR REFERENCE ONLY. REFER TO PRODUCT SPECIFIC TECHNICAL DATA SHEET (TDS) FOR PRODUCT SPECIFIC ACCEPTABLE SUBSTRATES.
2. TRANSITION DETAIL IS SUITABLE FOR BOTH REINFORCED AND UNREINFORCED **PUMADEC SYSTEM** FIELD MEMBRANE APPLICATIONS. TOP, WEAR, AND TRAFFIC COATING NOT SHOWN FOR CLARITY. REFER TO **PUMADEC SYSTEM** DETAILS FOR FURTHER CLARITY.
3. REFER TO PRODUCT SPECIFIC TECHNICAL DATA SHEET (TDS), GUIDE SPECIFICATION AND INSTALLATION MANUAL FOR INSTALLATION PROCEDURES.

Henry[®]

999 N. Pacific Coast Highway, Suite 800
El Segundo, CA 90245
800-486-1278 • www.henry.com

MANUFACTURER GUIDE DETAILS ARE FOR REFERENCE ONLY. HENRY DOES NOT ASSUME RESPONSIBILITY FOR ERRORS OR DEVIATIONS IN DESIGN OR ENGINEERING. PROJECT SPECIFIC VERIFICATION IS RECOMMENDED PRIOR TO INSTALLATION.

AIR-BLOC 31MR TIE-IN TO PUMADEC SYSTEM

TIE-IN DETAIL

**EXPOSED FLASHING
PUMADEC 31MV**

SCALE: N.T.S.

06-05-2019

AB31MR-TID3A