

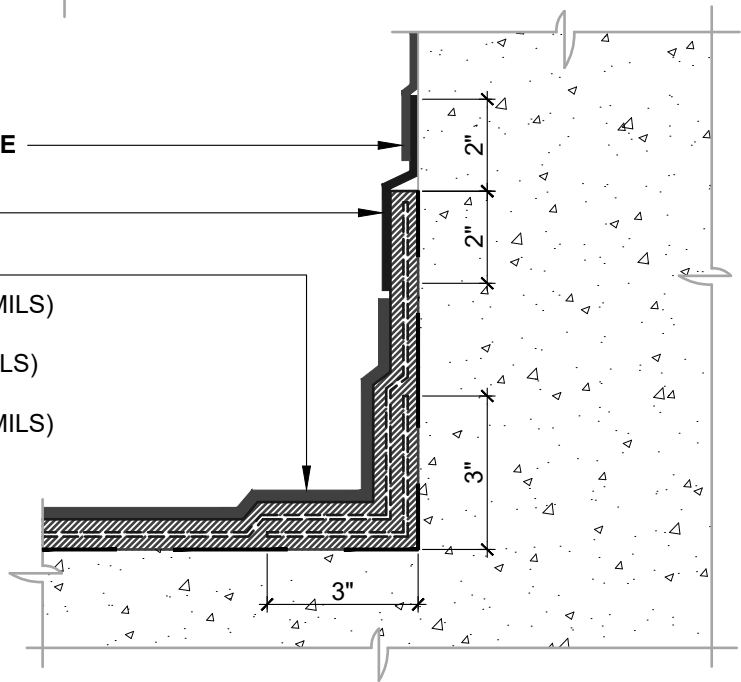
COLD JOINT AT UPTURN

N.T.S

AIR-BLOC ALL WEATHER STPE

BLUESKIN SA

MODIFIEDPLUS G100S/S
HENRY 790-11/790-11EV (125 MILS)
POLYESTER FABRIC
HENRY 790-11/790-11EV (90 MILS)
POLYESTER FABRIC
HENRY 790-11/790-11EV (125 MILS)
PRIMER (SEE NOTE #2)



CONTINUOUS CURB AT UPTURN

N.T.S

NOTES:

1. DETAIL SHOWS **AIR-BLOC ALL WEATHER STPE FLUID APPLIED VAPOR PERMEABLE AIR BARRIER** AND **HENRY 790-11/790-11EV HOT RUBBERIZED ASPHALT TRANSITION**. SUBSTRATE SHOWN IS FOR REFERENCE ONLY. REFER TO PRODUCT SPECIFIC TECHNICAL DATA SHEET (TDS) FOR PRODUCT SPECIFIC ACCEPTABLE SUBSTRATES.
2. RECOMMENDED ADHESIVE/PRIMER FOR **HENRY 790-11/790-11EV**: **HENRY 910-01 ASPHALT PRIMER** OR **HENRY 930-18 POLYMER MODIFIED ADHESIVE**. REFER TO PRODUCT SPECIFIC TECHNICAL DATA SHEET TO CONFIRM VOC COMPLIANCE.
3. REFER TO PRODUCT SPECIFIC TECHNICAL DATA SHEET (TDS), GUIDE SPECIFICATION AND INSTALLATION MANUAL FOR INSTALLATION PROCEDURES.

Henry[®]

999 N. Pacific Coast Highway, Suite 800
 El Segundo, CA 90245
 800-486-1278 • www.henry.com

MANUFACTURER GUIDE DETAILS ARE FOR REFERENCE ONLY. HENRY DOES NOT ASSUME RESPONSIBILITY FOR ERRORS OR DEVIATIONS IN DESIGN OR ENGINEERING. PROJECT SPECIFIC VERIFICATION IS RECOMMENDED PRIOR TO INSTALLATION.

AIR-BLOC ALL WEATHER STPE TIE-IN TO HENRY 790-11/790-11EV

TIE-IN DETAIL

REINFORCED CORNER
NEOFLASH, HENRY 990-25 OR POLYESTER FABRIC

SCALE: N.T.S.

05-22-2019

ABSTPE-TID1A