

**AIR BARRIER INSTALLED AFTER ROOFING**

N.T.S

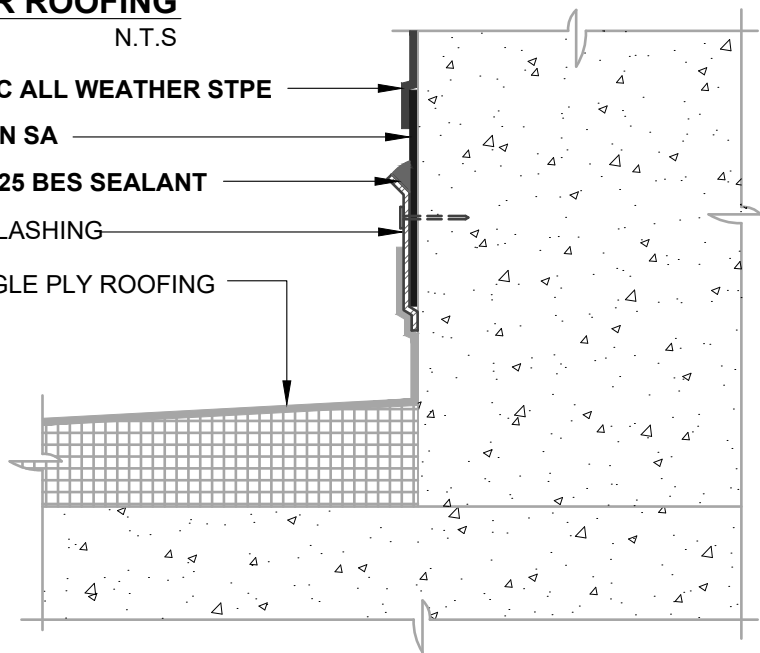
AIR-BLOC ALL WEATHER STPE

BLUESKIN SA

HENRY 925 BES SEALANT

METAL FLASHING

PVC SINGLE PLY ROOFING



**AIR BARRIER INSTALLED BEFORE ROOFING**

N.T.S

**NOTES:**

1. DETAIL SHOWS **AIR-BLOC ALL WEATHER STPE FLUID APPLIED VAPOR PERMEABLE AIR BARRIER** AND SINGLE PLY (PVC) ROOFING TRANSITION. SUBSTRATE SHOWN IS FOR REFERENCE ONLY. REFER TO PRODUCT SPECIFIC TECHNICAL DATA SHEET (TDS) FOR PRODUCT SPECIFIC ACCEPTABLE SUBSTRATES.
2. OTHER FLASHING OPTIONS INCLUDE: **BLUESKIN BUTYL FLASH, BLUESKIN SA LT OR METAL CLAD.**
3. REFER TO ROOFING MANUFACTURER FOR INSTALLATION REQUIREMENTS.
4. REFER TO PRODUCT SPECIFIC TECHNICAL DATA SHEET (TDS), GUIDE SPECIFICATION AND INSTALLATION MANUAL FOR INSTALLATION PROCEDURES.

**Henry**<sup>®</sup>

999 N. Pacific Coast Highway, Suite 800  
El Segundo, CA 90245  
800-486-1278 • www.henry.com

MANUFACTURER GUIDE DETAILS ARE FOR REFERENCE ONLY. HENRY DOES NOT ASSUME RESPONSIBILITY FOR ERRORS OR DEVIATIONS IN DESIGN OR ENGINEERING. PROJECT SPECIFIC VERIFICATION IS RECOMMENDED PRIOR TO INSTALLATION.

**AIR-BLOC ALL WEATHER STPE TIE-IN TO PVC SINGLE PLY ROOFING**

**TIE-IN DETAIL**

**AIR BARRIER AND SINGLE PLY ROOFING TRANSITION  
POLYVINYL CHLORIDE (PVC) ROOFING**

SCALE: N.T.S.

05-22-2019

**ABSTPE-TID4B**