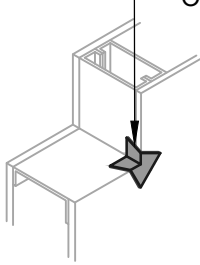


**OPTION #1**

GUSSET

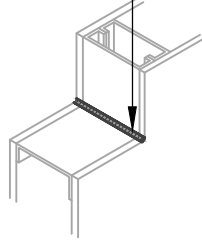
BLUESKIN SA



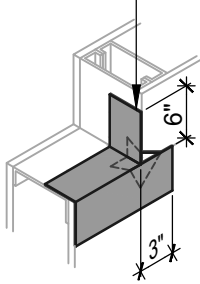
**OPTION #2**

SEALANT

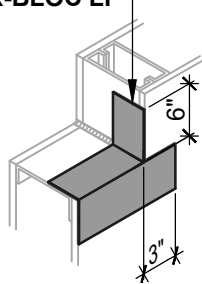
HENRY 925 BES SEALANT OR AIR-BLOC LF



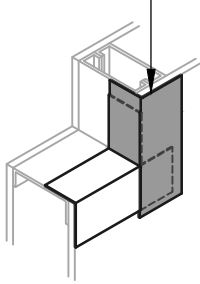
BLUESKIN SA



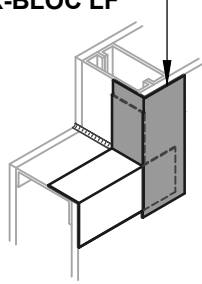
BLUESKIN SA OR AIR-BLOC LF



BLUESKIN SA



BLUESKIN SA OR AIR-BLOC LF



**WINDOW SILL/JAMB FLASHING**

SEALANT AND GUSSET METHODS

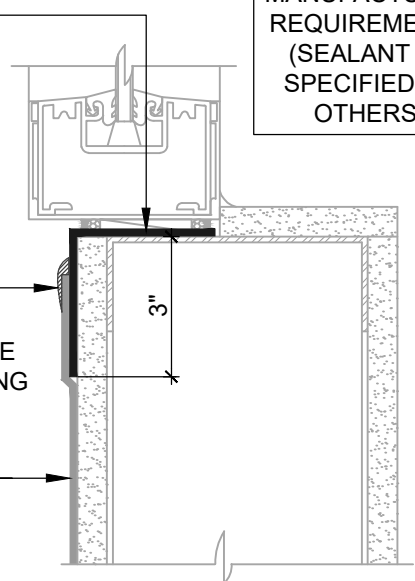
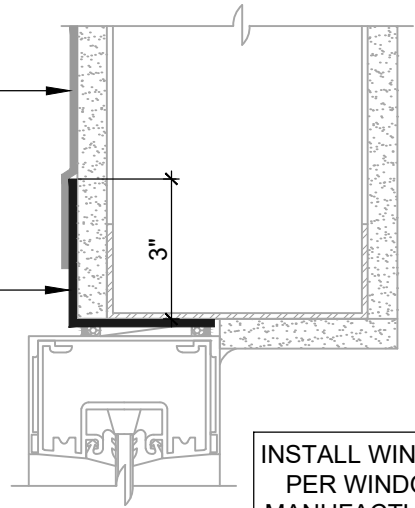
BLUESKIN SA  
LAP AIR BARRIER 2" ONTO  
FLASHING

BLUESKIN SA  
OR AIR-BLOC LF  
EXTEND FLASHING  
3" (SUGGESTED) INTO  
ROUGH OPENING (2" MIN)

BLUESKIN SA  
OR AIR-BLOC LF  
EXTEND FLASHING  
3" (SUGGESTED) INTO  
ROUGH OPENING (2" MIN)

HENRY 925 BES SEALANT  
OR AIR-BLOC LF  
ENCAPSULATE UPPER EDGE OF  
SELF-ADHERED FLASHING  
REVERSE LAP

BLUESKIN SA  
LAP AIR BARRIER 2" ONTO  
FLASHING



INSTALL WINDOW  
PER WINDOW  
MANUFACTURER  
REQUIREMENTS  
(SEALANT AS  
SPECIFIED BY  
OTHERS)

**ASTM E2112- METHOD B (SECTION VIEW)**

FLASHING INSTALLED BEFORE WRB

**NOTES:**

1. DETAIL SHOWS **BLUESKIN SA SELF-ADHERED WATER RESISTIVE AIR BARRIER**. SUBSTRATE SHOWN IS FOR REFERENCE ONLY. ACCEPTABLE SUBSTRATES INCLUDE PLYWOOD, OSB, CONCRETE, CMU, METAL, AND EXTERIOR GRADE SHEATHING.
2. SELF-ADHERED MEMBRANE PRIMER NOT SHOWN FOR CLARITY.
3. OTHER FLASHING OPTIONS INCLUDE: **BLUESKIN SA LT, BLUESKIN BUTYL FLASH** OR **BLUESKIN METAL CLAD**.
4. HENRY WINDOW FLASHING DETAILS ARE BASED ON ASTM E2112. ACTUAL CONDITIONS MAY VARY. VERIFY PROJECT SPECIFIC WINDOW INSTALLATION REQUIREMENTS AND FLASHING COMPATIBILITY WITH DESIGN PROFESSIONAL.
5. INSTALL **BLUESKIN SA** TO ACHIEVE A CONTINUOUS WATER-RESISTIVE BARRIER (WRB). INSULATION AND CLADDING NOT SHOWN FOR CLARITY.
6. REFER TO PRODUCT SPECIFIC TECHNICAL DATA SHEET (TDS) AND **BLUESKIN SA** GUIDE SPECIFICATION FOR INSTALLATION PROCEDURES.



999 N. Pacific Coast Highway, Suite 800  
El Segundo, CA 90245  
800-486-1278 • www.henry.com

MANUFACTURER GUIDE DETAILS ARE FOR REFERENCE ONLY. HENRY DOES NOT ASSUME RESPONSIBILITY FOR ERRORS OR DEVIATIONS IN DESIGN OR ENGINEERING. PROJECT SPECIFIC VERIFICATION IS RECOMMENDED PRIOR TO INSTALLATION.

**BLUESKIN SA SELF-ADHERED WATER RESISTIVE AIR BARRIER**

**NON-FLANGED WINDOW**

**ASTM E2112 METHOD B  
FLASHING INSTALLED BEFORE WRB**

SCALE: N.T.S.

06-30-2020

**BSSA-6B-A**