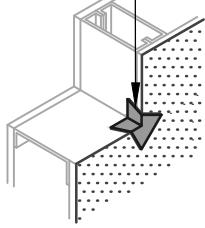


OPTION #1

GUSSET

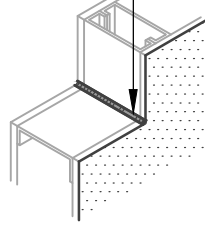
BLUESKIN METAL CLAD



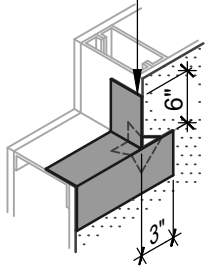
OPTION #2

SEALANT

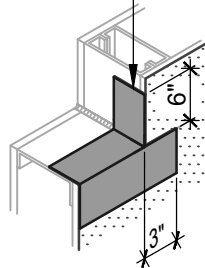
HENRY 925 BES SEALANT OR AIR-BLOC LF



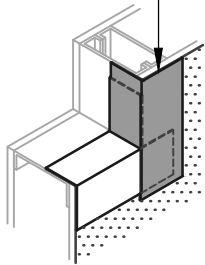
BLUESKIN METAL CLAD



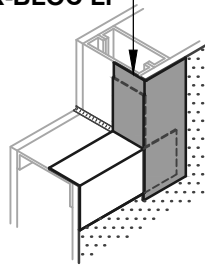
BLUESKIN METAL CLAD OR AIR-BLOC LF



BLUESKIN METAL CLAD



BLUESKIN METAL CLAD OR AIR-BLOC LF

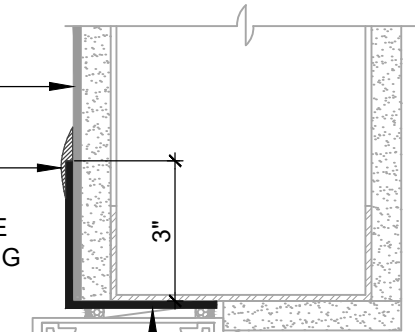


WINDOW SILL/JAMB FLASHING

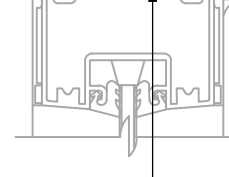
SEALANT AND GUSSET METHODS

BLUESKIN METAL CLAD

HENRY 925 BES SEALANT OR AIR-BLOC LF ENCAPSULATE UPPER EDGE OF SELF-ADHERED FLASHING REVERSE LAP

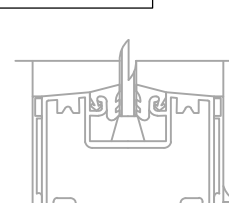


BLUESKIN METAL CLAD OR AIR-BLOC LF EXTEND FLASHING 3" (SUGGESTED) INTO ROUGH OPENING (2" MIN)

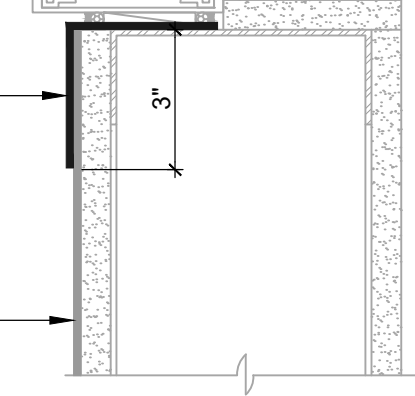


INSTALL WINDOW PER WINDOW MANUFACTURER REQUIREMENTS (SEALANT AS SPECIFIED BY OTHERS)

BLUESKIN METAL CLAD OR AIR-BLOC LF EXTEND FLASHING 3" (SUGGESTED) INTO ROUGH OPENING (2" MIN)



BLUESKIN METAL CLAD



ASTM E2112- METHOD B1 (SECTION VIEW)

FLASHING INSTALLED AFTER WRB

NOTES:

1. DETAIL SHOWS **BLUESKIN METAL CLAD SELF-ADHERED WATER RESISTIVE AIR BARRIER**. SUBSTRATE SHOWN IS FOR REFERENCE ONLY. ACCEPTABLE SUBSTRATES INCLUDE PLYWOOD, OSB, CONCRETE, CMU, METAL, AND EXTERIOR GRADE SHEATHING.
2. SELF-ADHERED MEMBRANE PRIMER NOT SHOWN FOR CLARITY.
3. OTHER FLASHING OPTIONS INCLUDE: **BLUESKIN BUTYL FLASH, BLUESKIN SA OR BLUESKIN SA LT.**
4. HENRY WINDOW FLASHING DETAILS ARE BASED ON ASTM E2112. ACTUAL CONDITIONS MAY VARY. VERIFY PROJECT SPECIFIC WINDOW INSTALLATION REQUIREMENTS AND FLASHING COMPATIBILITY WITH DESIGN PROFESSIONAL.
5. INSTALL **BLUESKIN METAL CLAD** TO ACHIEVE A CONTINUOUS WATER-RESISTIVE BARRIER (WRB). INSULATION AND CLADDING NOT SHOWN FOR CLARITY.
6. REFER TO PRODUCT SPECIFIC TECHNICAL DATA SHEET (TDS) AND **BLUESKIN METAL CLAD** GUIDE SPECIFICATION FOR INSTALLATION PROCEDURES.



999 N. Pacific Coast Highway, Suite 800
El Segundo, CA 90245
800-486-1278 • www.henry.com

MANUFACTURER GUIDE DETAILS ARE FOR REFERENCE ONLY. HENRY DOES NOT ASSUME RESPONSIBILITY FOR ERRORS OR DEVIATIONS IN DESIGN OR ENGINEERING. PROJECT SPECIFIC VERIFICATION IS RECOMMENDED PRIOR TO INSTALLATION.

BLUESKIN METAL CLAD SELF-ADHERED AIR BARRIER

NON-FLANGED WINDOW

**ASTM E2112 METHOD B1
FLASHING INSTALLED AFTER WRB**

SCALE: N.T.S.

01-09-2020

MTLCLD-6B1-A