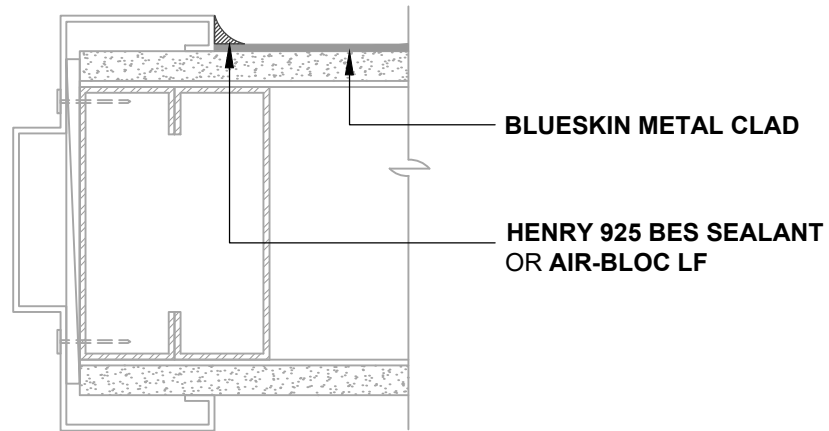


ASTM E2112- METHOD B1 (PLAN VIEW)
FLASHING INSTALLED BEFORE WRB

ASTM E2112- METHOD B1 (PLAN VIEW)
FLASHING INSTALLED AFTER WRB



ASTM E2112- METHOD A (PLAN VIEW)
WRB INSTALLED AFTER DOOR FRAME

NOTES:

1. DETAIL SHOWS **BLUESKIN METAL CLAD SELF-ADHERED WATER RESISTIVE AIR BARRIER**. SUBSTRATE SHOWN IS FOR REFERENCE ONLY. ACCEPTABLE SUBSTRATES INCLUDE PLYWOOD, OSB, CONCRETE, CMU, METAL, AND EXTERIOR GRADE SHEATHING.
2. SELF-ADHERED MEMBRANE PRIMER NOT SHOWN FOR CLARITY.
3. OTHER FLASHING OPTIONS INCLUDE: **BLUESKIN BUTYL FLASH, BLUESKIN SA OR BLUESKIN SA LT.**
4. HENRY WINDOW FLASHING DETAILS ARE BASED ON ASTM E2112. ACTUAL CONDITIONS MAY VARY. VERIFY PROJECT SPECIFIC WINDOW INSTALLATION REQUIREMENTS AND FLASHING COMPATIBILITY WITH DESIGN PROFESSIONAL.
5. INSTALL **BLUESKIN METAL CLAD** TO ACHIEVE A CONTINUOUS WATER-RESISTIVE BARRIER (WRB). INSULATION AND CLADDING NOT SHOWN FOR CLARITY. REFER TO LOCAL CODE ORDINANCES FOR INSULATION AND VAPOR BARRIER REQUIREMENTS.
6. REFER TO PRODUCT SPECIFIC TECHNICAL DATA SHEET (TDS) AND **BLUESKIN METAL CLAD GUIDE SPECIFICATION** FOR INSTALLATION PROCEDURES.

MANUFACTURER GUIDE DETAILS ARE FOR REFERENCE ONLY. HENRY DOES NOT ASSUME RESPONSIBILITY FOR ERRORS OR DEVIATIONS IN DESIGN OR ENGINEERING. PROJECT SPECIFIC VERIFICATION IS RECOMMENDED PRIOR TO INSTALLATION.

BLUESKIN METAL CLAD SELF-ADHERED AIR BARRIER

DOOR JAMB
TYPICAL JAMB FLASHING OPTIONS
HOLLOW METAL DOOR JAMB

SCALE: N.T.S. 01-09-2020

MTLCLD-6C

Henry[®]

999 N. Pacific Coast Highway, Suite 800
El Segundo, CA 90245
800-486-1278 • www.henry.com