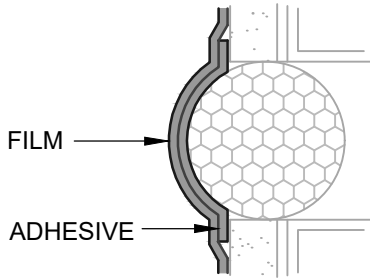


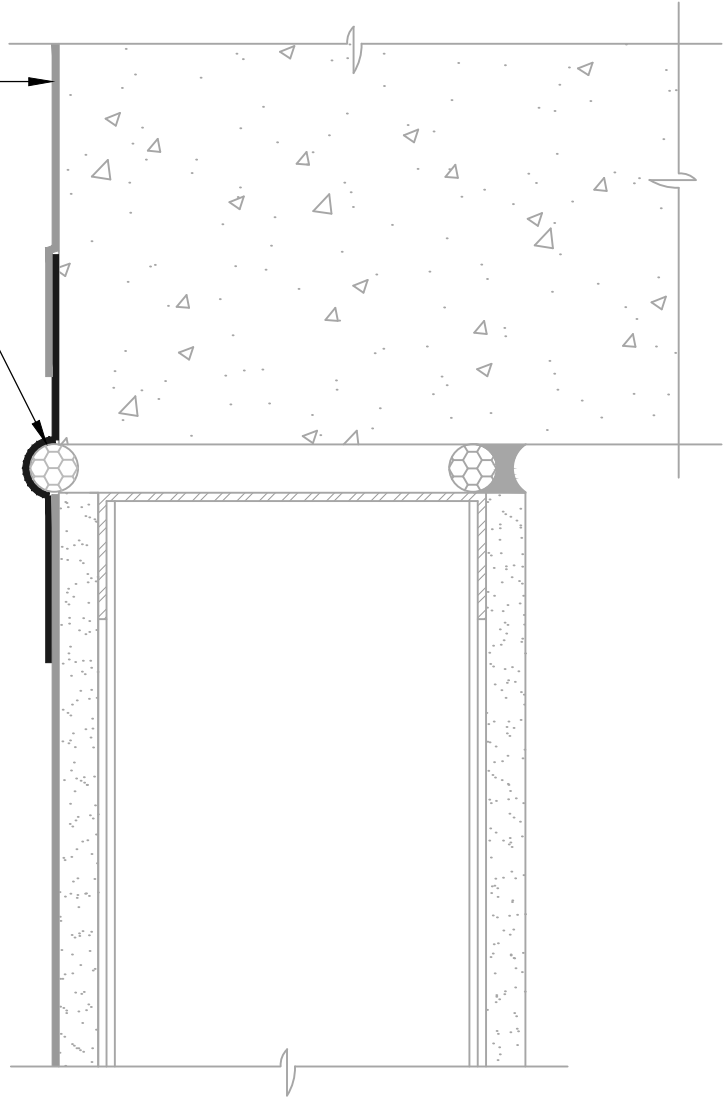
**BLUESKIN METAL CLAD**  
LAP AIR BARRIER 2" ONTO FLASHING

**BLUESKIN METAL CLAD**  
(SEE CONVEX LOOP FLASHING DETAIL)

CREATE CONVEX LOOP IN  
MEMBRANE OVER BACKER ROD.  
PRIOR TO INSTALLATION, ADHERE  
MEMBRANE TO ITSELF AND  
INSTALL TO PREVENT ADHESION  
TO BACKER ROD.



**CONVEX LOOP FLASHING**  
"SIAMESE" FLASHING



**NOTES:**

1. DETAIL SHOWS **BLUESKIN METAL CLAD SELF-ADHERED WATER RESISTIVE AIR BARRIER**. SUBSTRATE SHOWN IS FOR REFERENCE ONLY. ACCEPTABLE SUBSTRATES INCLUDE PLYWOOD, OSB, CONCRETE, CMU, METAL, AND EXTERIOR GRADE SHEATHING.
2. SELF-ADHERED MEMBRANE PRIMER NOT SHOWN FOR CLARITY.
3. OTHER FLASHING OPTIONS INCLUDE: **BLUESKIN BUTYL FLASH, BLUESKIN SA OR BLUESKIN SA LT.**
4. INSTALL **BLUESKIN METAL CLAD** TO ACHIEVE A CONTINUOUS WATER-RESISTIVE BARRIER (WRB). INSULATION AND CLADDING NOT SHOWN FOR CLARITY. REFER TO LOCAL CODE ORDINANCES FOR INSULATION AND VAPOR BARRIER REQUIREMENTS.
5. REFER TO PRODUCT SPECIFIC TECHNICAL DATA SHEET (TDS) AND **BLUESKIN METAL CLAD** GUIDE SPECIFICATION FOR INSTALLATION PROCEDURES.

**Henry**<sup>®</sup>

999 N. Pacific Coast Highway, Suite 800  
El Segundo, CA 90245  
800-486-1278 • www.henry.com

MANUFACTURER GUIDE DETAILS ARE FOR REFERENCE ONLY. HENRY DOES NOT ASSUME RESPONSIBILITY FOR ERRORS OR DEVIATIONS IN DESIGN OR ENGINEERING. PROJECT SPECIFIC VERIFICATION IS RECOMMENDED PRIOR TO INSTALLATION.

**BLUESKIN METAL CLAD SELF-ADHERED AIR BARRIER**

**DEFLECTION JOINT**

**HORIZONTAL DEFLECTION JOINT  
SELF-ADHERED FLASHING**

SCALE: N.T.S.

01-09-2020

**MTLCLD-8D**