

PUMADEC™ PRIMER 20

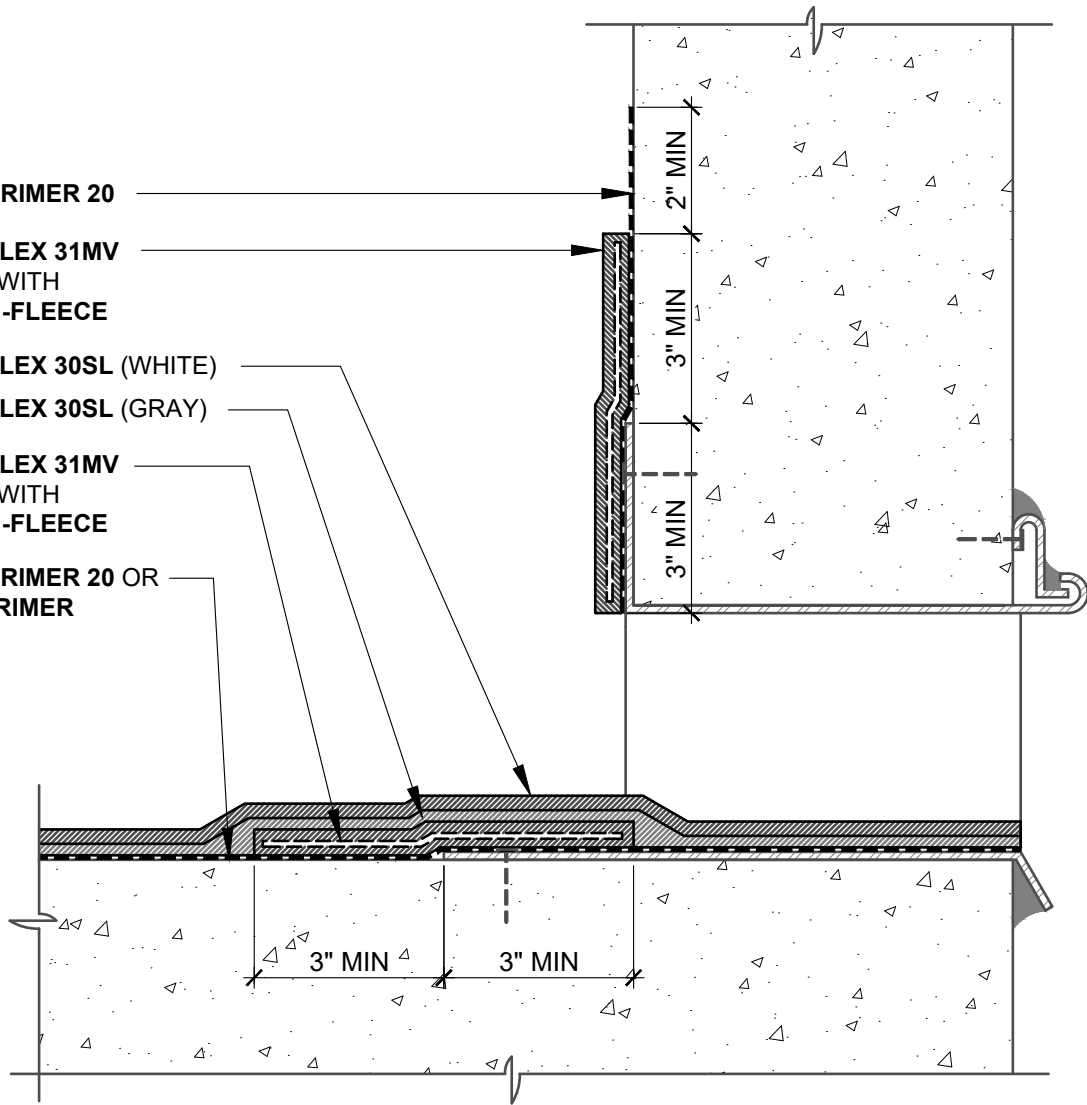
PUMADEC™ FLEX 31MV  
REINFORCED WITH  
PUMADEC™ N-FLEECE

PUMADEC™ FLEX 30SL (WHITE)

PUMADEC™ FLEX 30SL (GRAY)

PUMADEC™ FLEX 31MV  
REINFORCED WITH  
PUMADEC™ N-FLEECE

PUMADEC™ PRIMER 20 OR  
HENRY® GC PRIMER



**NOTES:**

1. DETAIL SHOWS HENRY® PUMADEC™ SYSTEM WATERPROOFING ASSEMBLY WITH AN UNREINFORCED FIELD MEMBRANE. SUBSTRATE SHOWN IS FOR REFERENCE ONLY. REFER TO PRODUCT SPECIFIC TECHNICAL DATA SHEET FOR AUTHORIZED SUBSTRATES.
2. SURFACE PROFILES MUST MEET ICRI CSP 3-4. IF CSP 5, REFER TO REINFORCED PUMADEC™ SYSTEM DETAILS.
3. PREPARE AND PRIME VERTICAL SUBSTRATES A MINIMUM 2" BEYOND PUMADEC™ SYSTEM APPLICATION IN ACCORDANCE WITH HENRY® PUMADEC™ SYSTEM SUBSTRATE PREPARATION GUIDELINES TECH-TALK BULLETIN.
4. DO NOT INSTALL PUMADEC™ SYSTEM BEYOND PRIMED SURFACES.
5. BACK COAT FLEECE ON VERTICAL SURFACES WITH PUMADEC™ RESIN.
6. HENRY® OFFERS PAVERS, RIGID INSULATION, AND/OR PREFABRICATED DRAINAGE COMPOSITES AS A SINGLE SOURCE WARRANTY OPTION PER PROJECT SPECIFIC REQUIREMENTS (NOT SHOWN FOR CLARITY). CONTACT HENRY® FOR SYSTEM CONFIGURATIONS AND WARRANTY OPTIONS.
7. REFER TO PUMADEC™ SYSTEM GUIDE SPECIFICATION FOR RECOMMENDED INSTALLATION PROCEDURES.

# Henry®

999 N. Pacific Coast Highway, Suite 800  
El Segundo, CA 90245  
800-486-1278 • www.henry.com

MANUFACTURER GUIDE DETAILS ARE FOR REFERENCE ONLY. HENRY® DOES NOT ASSUME RESPONSIBILITY FOR ERRORS OR DEVIATIONS IN DESIGN OR ENGINEERING. PROJECT SPECIFIC VERIFICATION IS RECOMMENDED PRIOR TO INSTALLATION.

## PUMADEC™ SYSTEM - WATERPROOFING ASSEMBLY

### SCUPPER UNREINFORCED FIELD MEMBRANE THRU-WALL SCUPPER FLASHING

SCALE: N.T.S.

04-26-2019

## PUMADEC-D3A