

PUMADEC™ PRIMER 20

PUMADEC™ FLEX 31MV
REINFORCED WITH
PUMADEC™ N-FLEECE

OPTIONAL TOP/WEAR COAT AS SPECIFIED
PER PROJECT SPECIFIC REQUIREMENTS
(REFER TO **PUMADEC™** SYSTEM DETAILS):

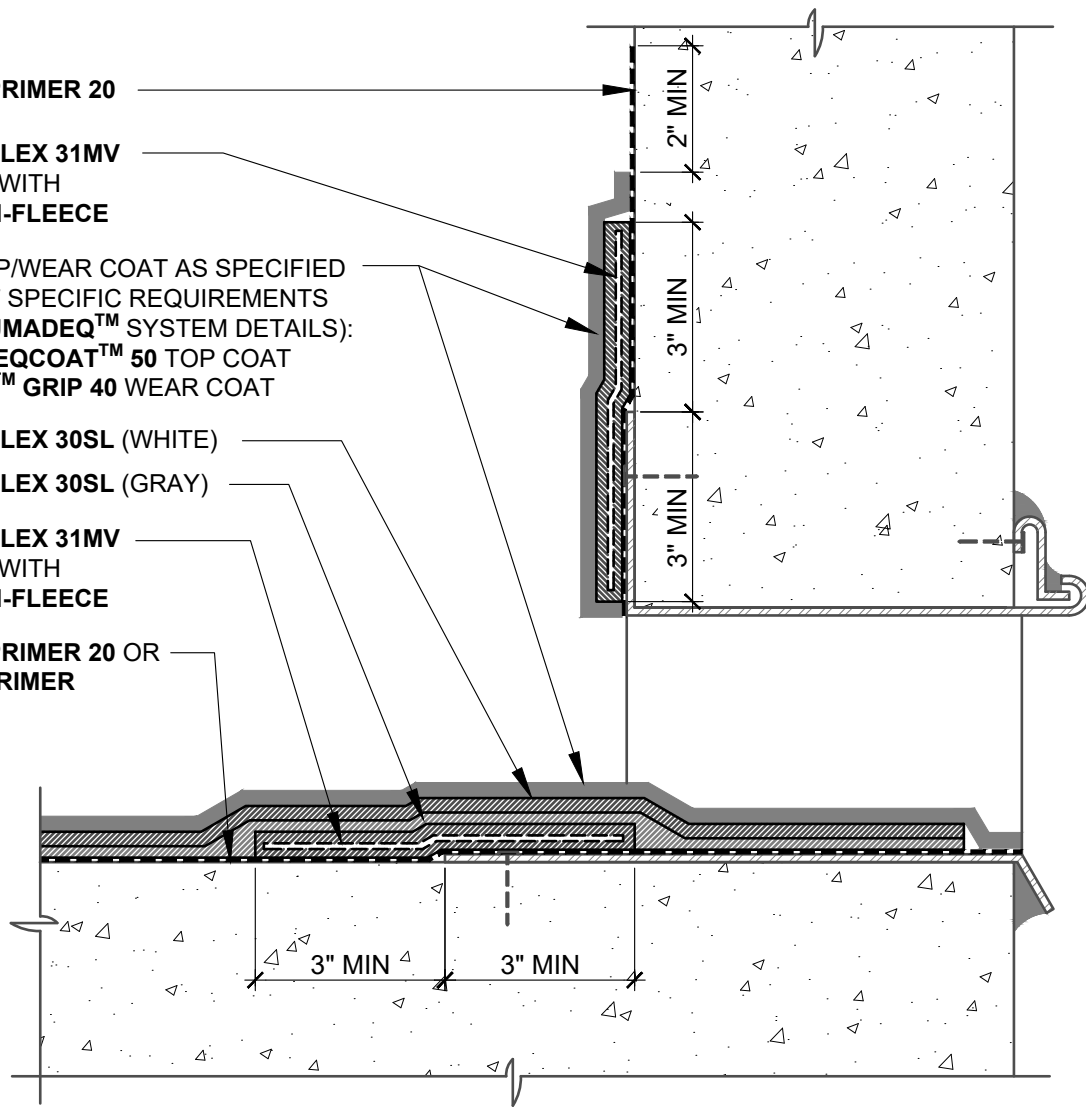
- **HENRY® DEQCOAT™ 50** TOP COAT
- **PUMADEC™ GRIP 40** WEAR COAT

PUMADEC™ FLEX 30SL (WHITE)

PUMADEC™ FLEX 30SL (GRAY)

PUMADEC™ FLEX 31MV
REINFORCED WITH
PUMADEC™ N-FLEECE

PUMADEC™ PRIMER 20 OR
HENRY® GC PRIMER



NOTES:

1. DETAIL SHOWS HENRY® **PUMADEC™** SYSTEM WATERPROOFING ASSEMBLY WITH AN UNREINFORCED FIELD MEMBRANE. SUBSTRATE SHOWN IS FOR REFERENCE ONLY. REFER TO PRODUCT SPECIFIC TECHNICAL DATA SHEET FOR AUTHORIZED SUBSTRATES.
2. SURFACE PROFILES MUST MEET ICRI CSP 3-4. IF CSP 5, REFER TO REINFORCED **PUMADEC™** SYSTEM DETAILS.
3. PREPARE AND PRIME VERTICAL SUBSTRATES A MINIMUM 2" BEYOND **PUMADEC™** SYSTEM APPLICATION IN ACCORDANCE WITH HENRY® **PUMADEC™** SYSTEM SUBSTRATE PREPARATION GUIDELINES TECH-TALK BULLETIN.
4. DO NOT INSTALL **PUMADEC™** SYSTEM BEYOND PRIMED SURFACES.
5. BACK COAT FLEECE ON VERTICAL SURFACES WITH **PUMADEC™** RESIN.
6. HENRY® OFFERS PAVERS, RIGID INSULATION, AND/OR PREFABRICATED DRAINAGE COMPOSITES AS A SINGLE SOURCE WARRANTY OPTION PER PROJECT SPECIFIC REQUIREMENTS (NOT SHOWN FOR CLARITY). CONTACT HENRY® FOR SYSTEM CONFIGURATIONS AND WARRANTY OPTIONS.
7. REFER TO **PUMADEC™** SYSTEM GUIDE SPECIFICATION FOR RECOMMENDED INSTALLATION PROCEDURES.

Henry®

999 N. Pacific Coast Highway, Suite 800
El Segundo, CA 90245
800-486-1278 • www.henry.com

MANUFACTURER GUIDE DETAILS ARE FOR REFERENCE ONLY. HENRY® DOES NOT ASSUME RESPONSIBILITY FOR ERRORS OR DEVIATIONS IN DESIGN OR ENGINEERING. PROJECT SPECIFIC VERIFICATION IS RECOMMENDED PRIOR TO INSTALLATION.

PUMADEC™ SYSTEM - WATERPROOFING ASSEMBLY

SCUPPER

**UNREINFORCED FIELD MEMBRANE - THRU-WALL
SCUPPER FLASHING WITH TOP OR WEAR COAT**

SCALE: N.T.S.

04-26-2019

PUMADEC-D3B