

PUMADEC™ PRIMER 20

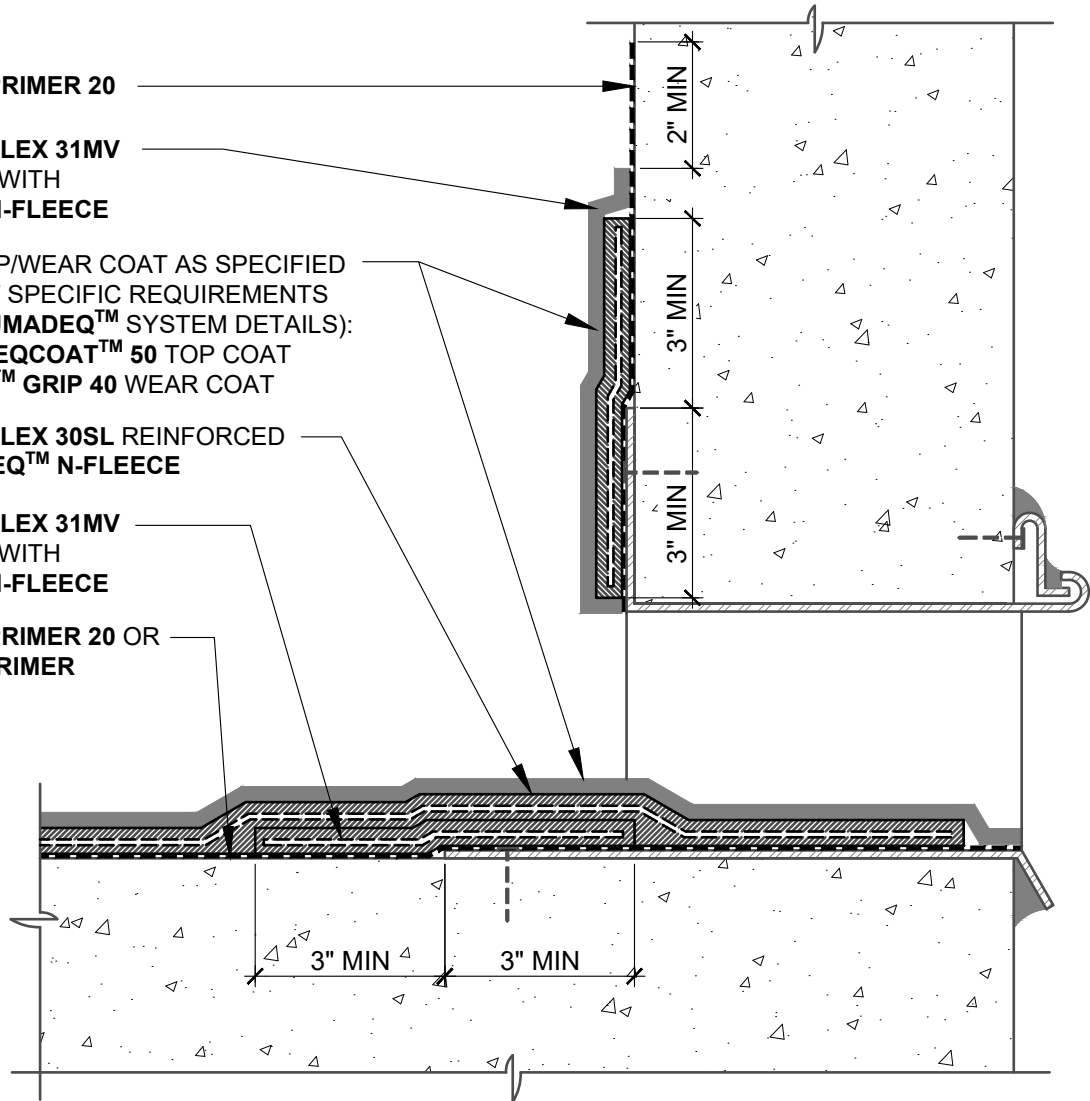
PUMADEC™ FLEX 31MV
REINFORCED WITH
PUMADEC™ N-FLEECE

OPTIONAL TOP/WEAR COAT AS SPECIFIED
PER PROJECT SPECIFIC REQUIREMENTS
(REFER TO PUMADEC™ SYSTEM DETAILS):
• HENRY® DEQCOAT™ 50 TOP COAT
• PUMADEC™ GRIP 40 WEAR COAT

PUMADEC™ FLEX 30SL REINFORCED
WITH PUMADEC™ N-FLEECE

PUMADEC™ FLEX 31MV
REINFORCED WITH
PUMADEC™ N-FLEECE

PUMADEC™ PRIMER 20 OR
HENRY® GC PRIMER



NOTES:

1. DETAIL SHOWS HENRY® PUMADEC™ SYSTEM WATERPROOFING ASSEMBLY WITH A REINFORCED FIELD MEMBRANE. SUBSTRATE SHOWN IS FOR REFERENCE ONLY. REFER TO PRODUCT SPECIFIC TECHNICAL DATA SHEET FOR AUTHORIZED SUBSTRATES.
2. PREPARE AND PRIME VERTICAL SUBSTRATES A MINIMUM 2" BEYOND PUMADEC™ SYSTEM APPLICATION IN ACCORDANCE WITH HENRY® PUMADEC™ SYSTEM SUBSTRATE PREPARATION GUIDELINES TECH-TALK BULLETIN.
3. DO NOT INSTALL PUMADEC™ SYSTEM BEYOND PRIMED SURFACES.
4. BACK COAT FLEECE ON VERTICAL SURFACES WITH PUMADEC™ RESIN.
5. HENRY® OFFERS PAVERS, RIGID INSULATION, AND/OR PREFABRICATED DRAINAGE COMPOSITES AS A SINGLE SOURCE WARRANTY OPTION PER PROJECT SPECIFIC REQUIREMENTS (NOT SHOWN FOR CLARITY). CONTACT HENRY® FOR SYSTEM CONFIGURATIONS AND WARRANTY OPTIONS.
6. REFER TO PUMADEC™ SYSTEM GUIDE SPECIFICATION FOR RECOMMENDED INSTALLATION PROCEDURES.

Henry®

999 N. Pacific Coast Highway, Suite 800
El Segundo, CA 90245
800-486-1278 • www.henry.com

MANUFACTURER GUIDE DETAILS ARE FOR REFERENCE ONLY. HENRY® DOES NOT ASSUME RESPONSIBILITY FOR ERRORS OR DEVIATIONS IN DESIGN OR ENGINEERING. PROJECT SPECIFIC VERIFICATION IS RECOMMENDED PRIOR TO INSTALLATION.

PUMADEC™ SYSTEM - WATERPROOFING ASSEMBLY

SCUPPER

REINFORCED FIELD MEMBRANE - THRU-WALL
SCUPPER FLASHING WITH TOP OR WEAR COAT

SCALE: N.T.S.

04-26-2019

PUMADEC-D3D