



*Brooklyn Children's Museum
Brooklyn, NY*

Henry[®] Pumadeq[™] System

A fast-curing, long-lasting waterproofing solution

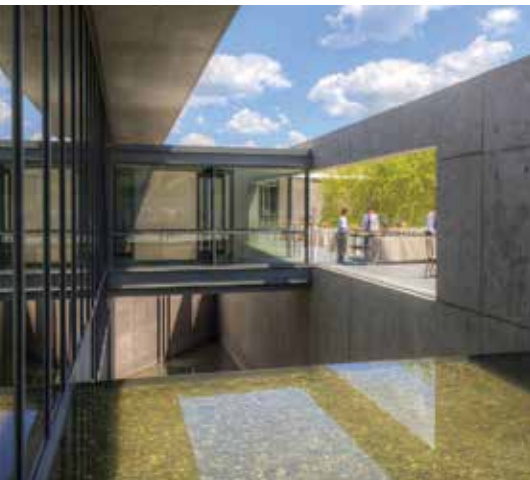
Restoration or new construction, the Henry® Pumadeq™ System provides superior waterproofing protection to any project.

Whatever your project or application need may be, keeping it on schedule and using components that will protect it long-term are key. The Henry® Pumadeq™ System lets you do both.

Backed by more than 80 years of Building Envelope Systems® knowledge, the Pumadeq System is a cold fluid-applied, seamless, monolithic waterproofing solution. Capable of setting in 30 minutes and able to withstand traffic one hour after installation,

the Pumadeq System helps speed the application process, even in low temperatures.

The system is UV-resistant and features PUMA technology, which combines Methyl Methacrylates with Polyurethanes. Along with unmatched performance and long-lasting durability, PUMA technology allows the Pumadeq System to offer outstanding low-temperature crack bridging without reinforcements.



Features & Benefits



Cold fluid-applied, requiring no special installation equipment



Fast cure time speeds application; can be trafficked within one hour by other construction trades and machinery



Low temperature crack bridging (no reinforcement required) and flexibility ensures better performance as building structures undergo thermal cycling



No detailing limitations such as laps, welds, seams, surface flashings or termination bars



Withstands constant water immersion; can be laid to zero pitch



Abrasion, puncture and UV resistant as well as VOC compliant

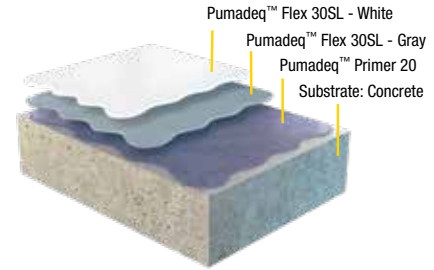
Typical uses for the Henry Pumadeq System:

- Protected membrane roofing
- Plaza decks
- Green roofs
- Split slabs
- Parking decks
- Balconies and walkways
- Water retention
- Flashing system

Plaza Deck System

(typical unreinforced system)

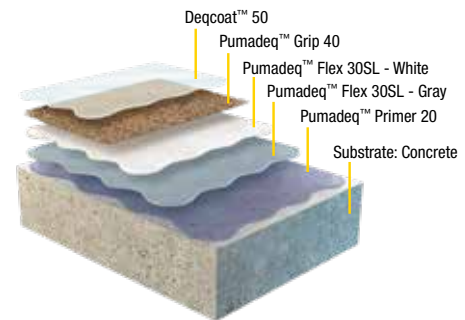
Core waterproofing system for a variety of applications, ranging from general plaza deck to vegetated roofing assemblies



Pedestrian / Balcony System

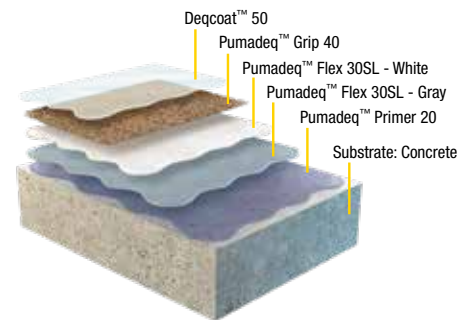
(typical unreinforced system)

High abrasion resistance provides an aesthetically pleasing pedestrian traffic solution



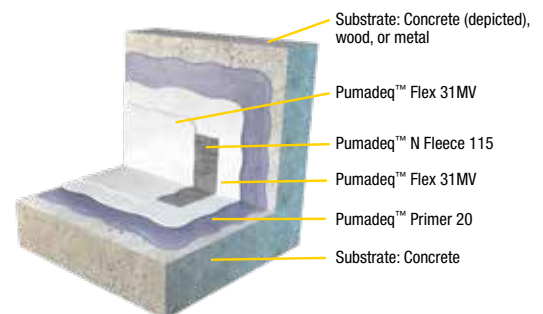
Vehicular Traffic System

High abrasion resistance ensures a durable, long-lasting solution



Flashing System

Highly durable solution mitigates risk at critical details



Henry® Pumadeq™ Waterproofing System Selection Chart

Use the selection chart below to choose which Henry® Pumadeq™ System is right for your waterproofing application.

	Products	Plaza Deck System	Pedestrian / Balcony System	Vehicular Traffic System	Flashing System
Primer	Pumadeq™ Primer 20	●	●	●	●
	Henry® GC Epoxy Primer ¹	●	●	●	●
Membrane	Pumadeq™ Flex 30SL ²	●	●	●	
	Pumadeq™ Flex 31MV ³				●
Reinforcement	Pumadeq™ N Fleece 115	Optional ⁴	Optional ⁴	Optional ⁴	●
Wear coat	Pumadeq™ Grip 40 ⁵	As required ⁸	●	●	
Aggregate	Sand sieve size 20-30 or approved by Henry®	As required ⁸	● ⁶	● ⁶	
Top coat	Henry® Deqcoat™ 50 ⁷		●	●	

1 Henry® GC Epoxy Primer may be used in lieu of Pumadeq™ Primer 20 on green or damp concrete surfaces.

2 SL (self leveling) for horizontal application only.

3 MV (medium viscosity) for vertical or horizontal application.

4 Reinforcement in the field is not required on standard Pumadeq™ System applications but may be required if substrate conditions are not acceptable or fleece reinforcement is indicated on the architectural details.

5 Pumadeq™ Grip 40 is available in gray and clear for colored aggregate.

6 Basic trafficable system requires sand sieve size 20-30 mesh aggregate and gray Deqcoat™ 50. Pedestrian Deco System requires ceramic quartz colored aggregate. When colored aggregate is to be used, select clear Deqcoat™ 50.

7 Deqcoat™ 50 is available in gray, white and clear.

8 Pumadeq™ Grip 40 and aggregate may be required when heavy traffic is expected or when directly bonded overburden is used.

Henry® | Building Envelope Systems®
Roofing | Air Barrier | Waterproofing

Ask us today about other Henry® solutions that help manage the flow of water, air, vapor and energy.

Henry and Pumadeq are registered trademarks of the Henry Company