

BLUESKIN® VP100

EXTERIOR SHEATHING

CLADDING AND
INSULATION AS SPECIFIED

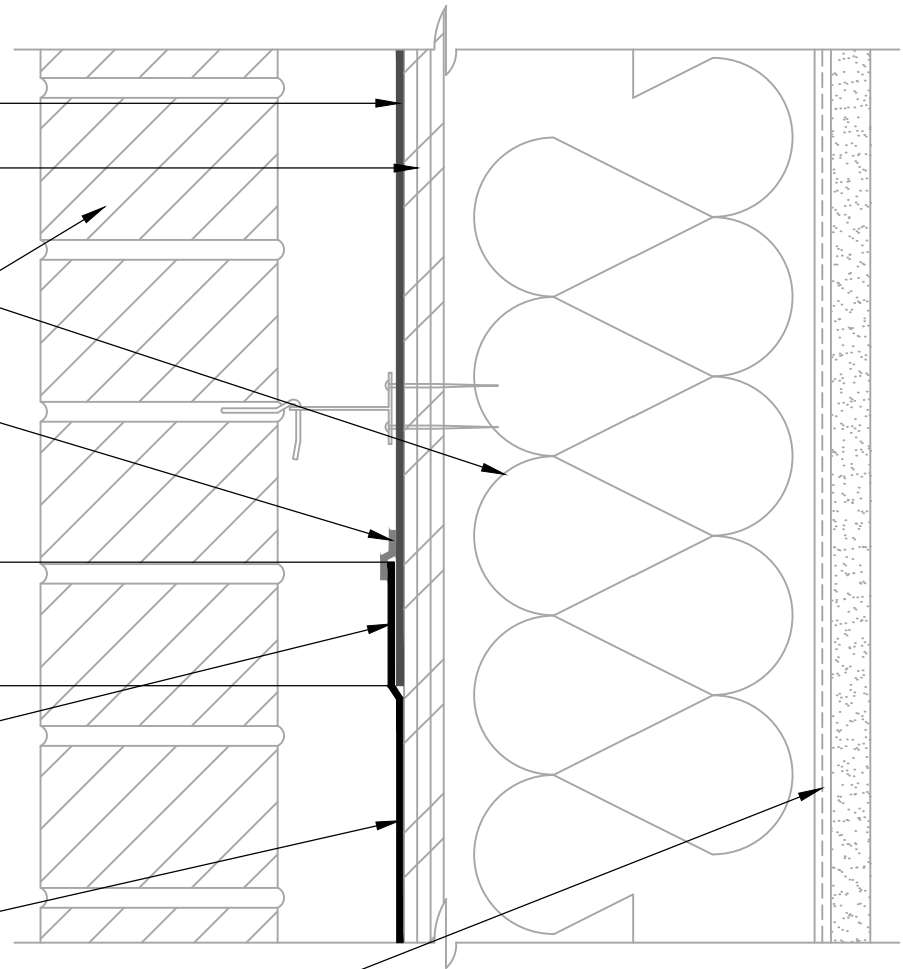
212 SEALANT
(TROWEL SEALANT UNTIL
MEMBRANE EDGE IS
FULLY COATED TO
PROMOTE WATER
SHEDDING)

2" MIN OVERLAP AT
HORIZONTAL SEAMS

INSTALL PRIMER AS
REQUIRED ENSURING
COMPLETE COVERAGE AT
ANTICIPATED REVERSE LAP
(SEE NOTE #2)

BLUESKIN® VP100,
BLUESKIN® BUTYL FLASH,
BLUESKIN® WB25,
BLUESKIN® WB,
AIR-BLOC® LF OR
BLUESKIN® TWF

OPTIONAL VAPOR BARRIER
(AS REQUIRED BY LOCAL
BUILDING CODE)



NOTES:

1. DETAIL SHOWS **BLUESKIN® VP100** ASSEMBLY INSTALLED OVER EXTERIOR GRADE SHEATHING. ACCEPTABLE SUBSTRATES INCLUDE PLYWOOD, OSB, CONCRETE, GYPSUM BOARD AND CONCRETE BLOCK
2. PRIME **BLUESKIN® VP100** WHERE **BLUESKIN® VP100, BLUESKIN® BUTYL FLASH, BLUESKIN® WB25, BLUESKIN® WB** OR **BLUESKIN® TWF** LAP ONTO **BLUESKIN® VP100**. RECOMMENDED PRIMERS/ADHESIVES INCLUDE: **BLUESKIN® LVC ADHESIVE, AQUATAC™ PRIMER** OR **BLUESKIN® ADHESIVE**.
3. INSTALL THE **BLUESKIN® VP100** ASSEMBLY TO PROVIDE A CONTINUOUS AIR AND WATER BARRIER.
4. REFER TO **BLUESKIN® VP100** INSTALLATION MANUAL FOR RECOMMENDED INSTALLATION PROCEDURES.

Henry®

999 Sepulveda Blvd., Suite 800
El Segundo, CA 90245
800-486-1278 • www.henry.com

MANUFACTURER GUIDE DETAILS ARE FOR REFERENCE ONLY. HENRY® DOES NOT ASSUME RESPONSIBILITY FOR ERRORS OR DEVIATIONS IN DESIGN OR ENGINEERING. PROJECT SPECIFIC VERIFICATION IS RECOMMENDED PRIOR TO INSTALLATION.

BLUESKIN® VP100 SELF-ADHERED WATER RESISTIVE AIR BARRIER

REVERSE LAP

**BLUESKIN® VP100 OR AUXILIARY FLASHING
LAPPING ONTO BLUESKIN® VP100**

SCALE: N.T.S.

11-27-2017

BSVP100-7A1