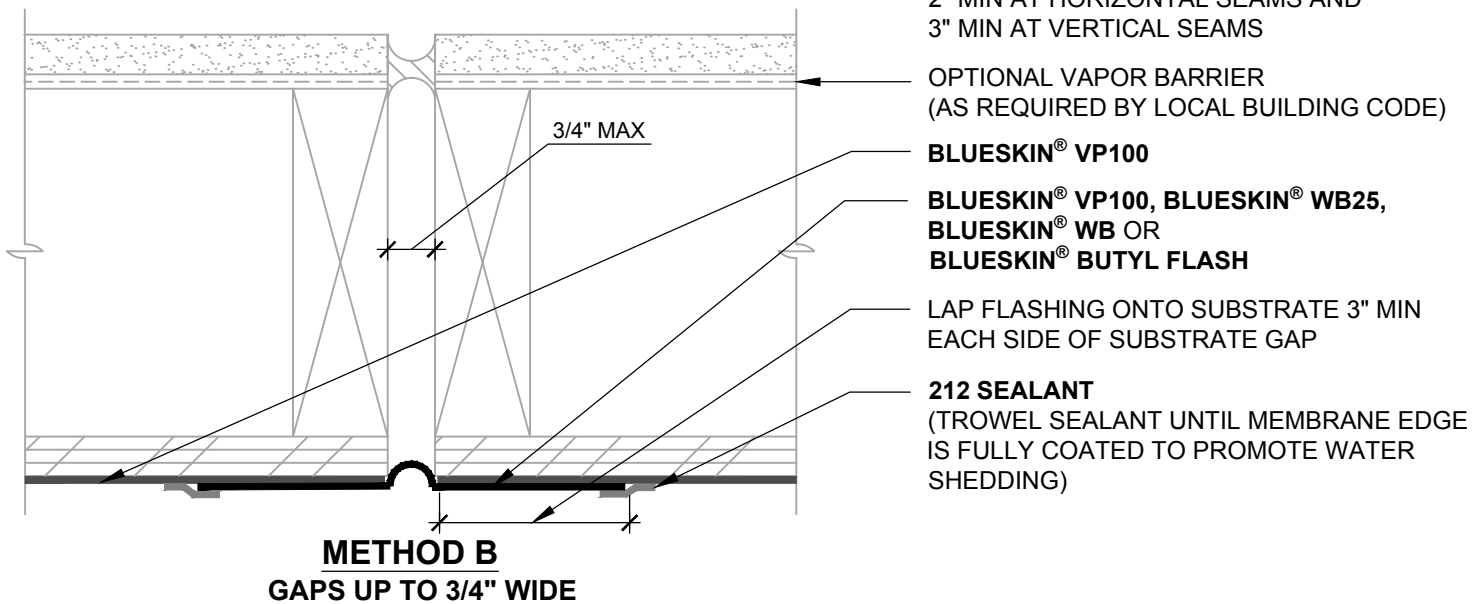


LAP **BLUESKIN® VP100** ONTO FLASHING
2" MIN AT HORIZONTAL SEAMS AND
3" MIN AT VERTICAL SEAMS



NOTES:

1. DETAIL SHOWS **BLUESKIN® VP100** ASSEMBLY INSTALLED OVER EXTERIOR GRADE SHEATHING. ACCEPTABLE SUBSTRATES INCLUDE PLYWOOD, OSB, CONCRETE, GYPSUM BOARD AND CONCRETE BLOCK.
2. PRIME **BLUESKIN® VP100** WHERE **BLUESKIN® WB25** OR **BLUESKIN® WB** LAPS ONTO **BLUESKIN® VP100**. RECOMMENDED PRIMERS/ADHESIVES INCLUDE: **BLUESKIN® LVC ADHESIVE, AQUATAC™ PRIMER** OR **BLUESKIN® ADHESIVE**.
3. INSULATION AND CLADDING NOT SHOWN FOR CLARITY.
4. INSTALL THE **BLUESKIN® VP100** ASSEMBLY TO PROVIDE A CONTINUOUS AIR AND WATER BARRIER.
5. REFER TO **BLUESKIN® VP100** GUIDE SPECIFICATION FOR RECOMMENDED INSTALLATION PROCEDURES.

Henry®

999 Sepulveda Blvd., Suite 800
El Segundo, CA 90245
800-486-1278 • www.henry.com

MANUFACTURER GUIDE DETAILS ARE FOR REFERENCE ONLY. HENRY® DOES NOT ASSUME RESPONSIBILITY FOR ERRORS OR DEVIATIONS IN DESIGN OR ENGINEERING. PROJECT SPECIFIC VERIFICATION IS RECOMMENDED PRIOR TO INSTALLATION.

BLUESKIN® VP100 SELF-ADHERED WATER RESISTIVE AIR BARRIER

CONSTRUCTION JOINTS

SUBSTRATE GAPS UP TO 3/4" WIDE MAXIMUM
SELF-ADHERED FLASHING - CONCAVE LOOP

SCALE: N.T.S.

12-18-2017

BSVP100-8B2